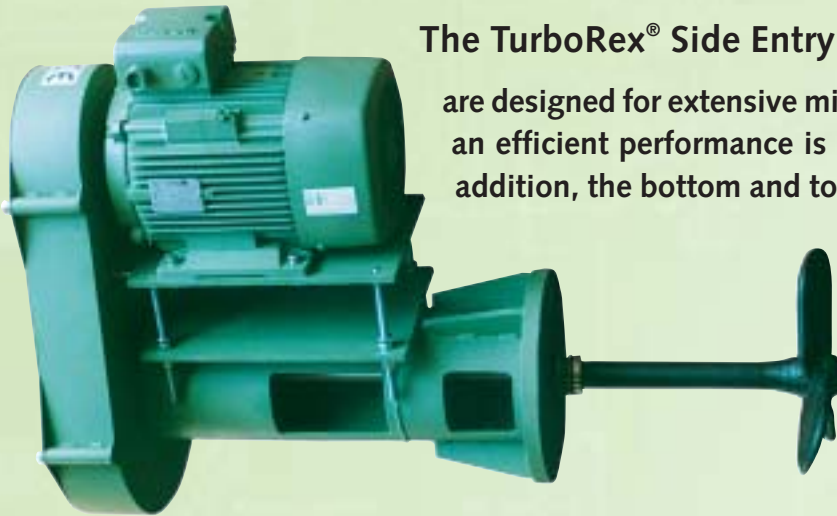


# Side Entry Mixer TurboRex® DRSK

The economical and professional solution for big vessels

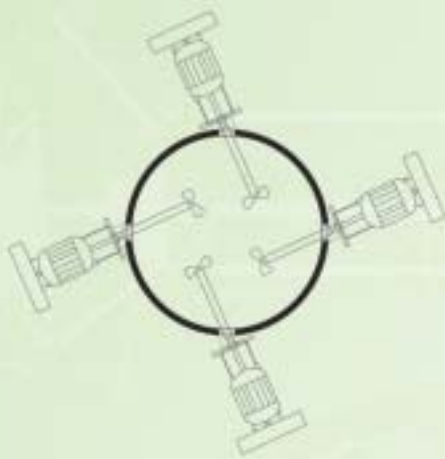


## The TurboRex® Side Entry Mixers

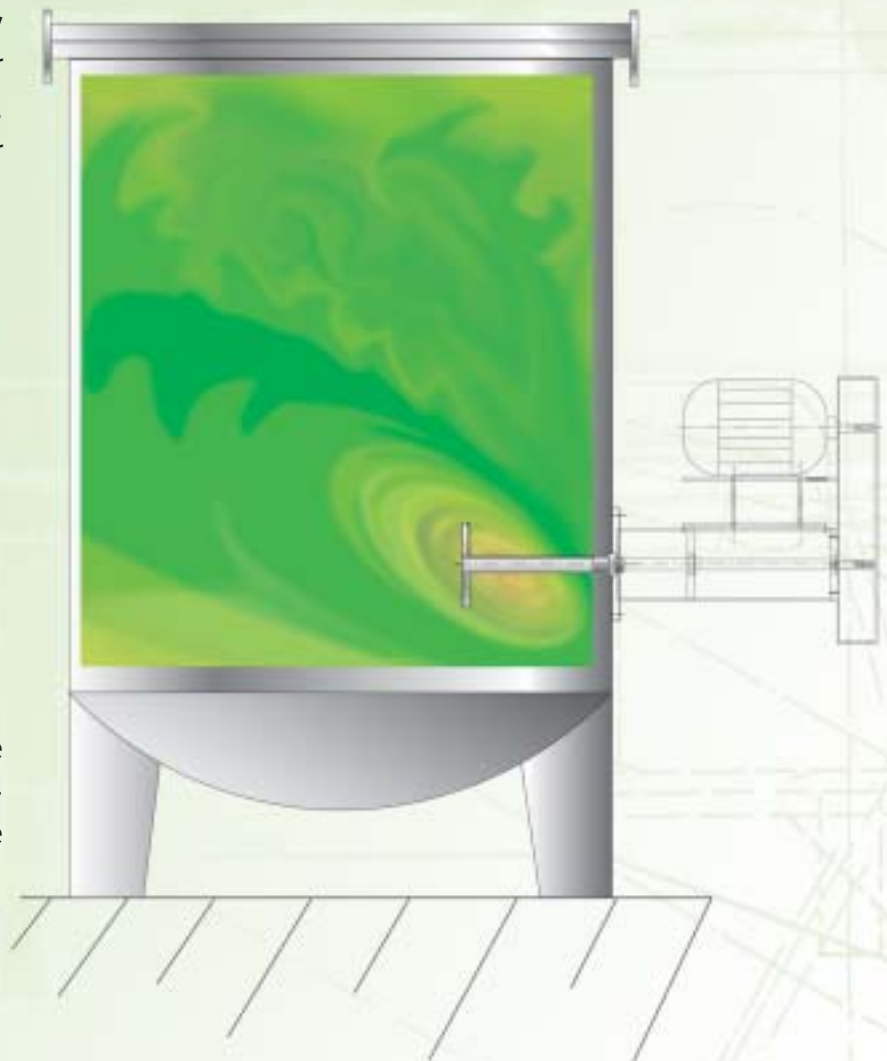
are designed for extensive mixing tasks in big vessels. Due to the side entry, an efficient performance is achieved and the work process simplified. In addition, the bottom and top areas remain free.

Due to the short mixing shaft, the bending strain remains low and thus the mixer can be equipped with a smaller dimension. The asymmetric flow enables to do without a flow blocker.

Vessels with big diameter and relatively low height, several mixers are attached outer mantle of the vessel at a certain radial angle. Thus, sediments are avoided to greater extend.



Various sizes of mantling flanges enable the usage with various vessel types. In combination of various types, you always achieve the maximum flow rate.



Your competent partner for quality

**ibW Ruhrwerkstechnik GmbH**

Im unteren Ried 16

D-75382 Althengstett

phone: +49 7051 / 93 01 00

fax: +49 7051 / 93 01 02

<http://www.ibw-ruehrer.de>

eMail: [info@ibw-ruehrer.de](mailto:info@ibw-ruehrer.de)

# TurboRex® – DRSK

Side Entry Mixer by ibW

The high quiet running typical for ibW Mixers are achieved by reinforced and encased bearings and stable steel bearing bars.

In order to meet any kind of mixing demands, there are different kinds of mixing elements. Optionally axial face seal for the side entry fitting is available. This has the entry directly at the fitting flange and thus the change of the axial face seal is fast and easy. Via an additionally available standstill seal, the axial face seal can be replaced with full vessel.

Components that get in contact with the product are made of stainless steel 1,4301 or 1,4571. For usage with aggressive products, it is possible to coat the components that get in contact with the product with hard rubber (Emoxit).

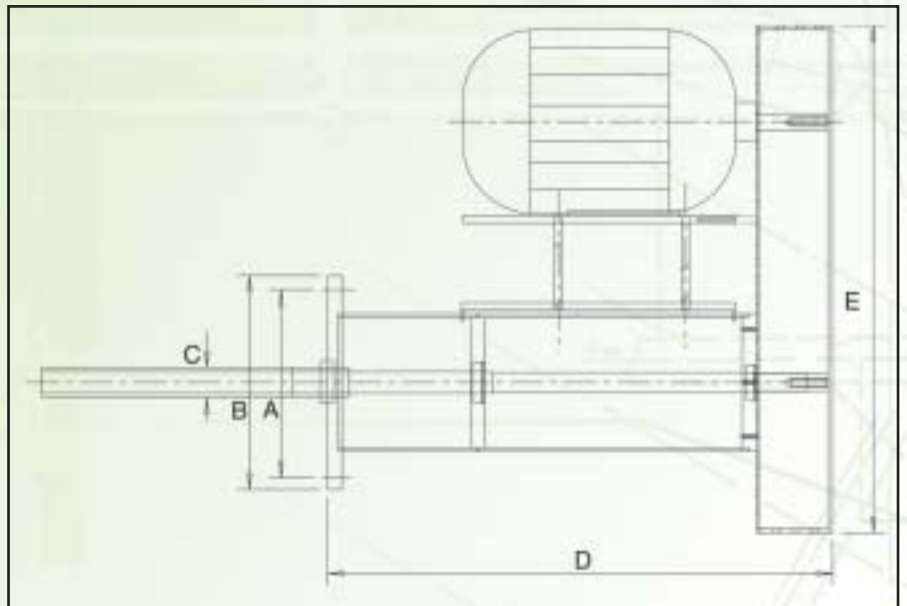
The standard paint of all mixers is RAL 6011, Reseda green; other colors can be used at request.

There is a choice of 2-pole, 4-pole, and 6-pole IEC motors, in general produced in IP54. Optionally it can be produced in IP55 with Ex-protection in Eexell-T3 or EEXdell-T4.

MODELS

TurboRex®	DRSK-40	DRSK-50	DRSK-60	DRSK-70
Meas. A Ø (mm)	265	265	300	350
Meas. B Ø (mm)	300	300	350	400
Meas. C Ø (mm)	30	30/40	50	80
Meas. D Ø (mm)	710	710	850	1000
Meas. E Ø (mm)	712	712	820	940
Max. mixing element	300	350	400	600/800
Power	1,0-3,0	4,0-9,0	11,0-15,0	18,5-37

Subject to technical changes



**ibW Rührwerkstechnik GmbH**

Im unteren Ried 16

D-75382 Althengstett

phone: +49 7051 / 930100

fax: +49 7051 / 930102

<http://www.ibw-ruehrer.de>

eMail: [info@ibw-ruehrer.de](mailto:info@ibw-ruehrer.de)

  
Rührwerkstechnik GmbH